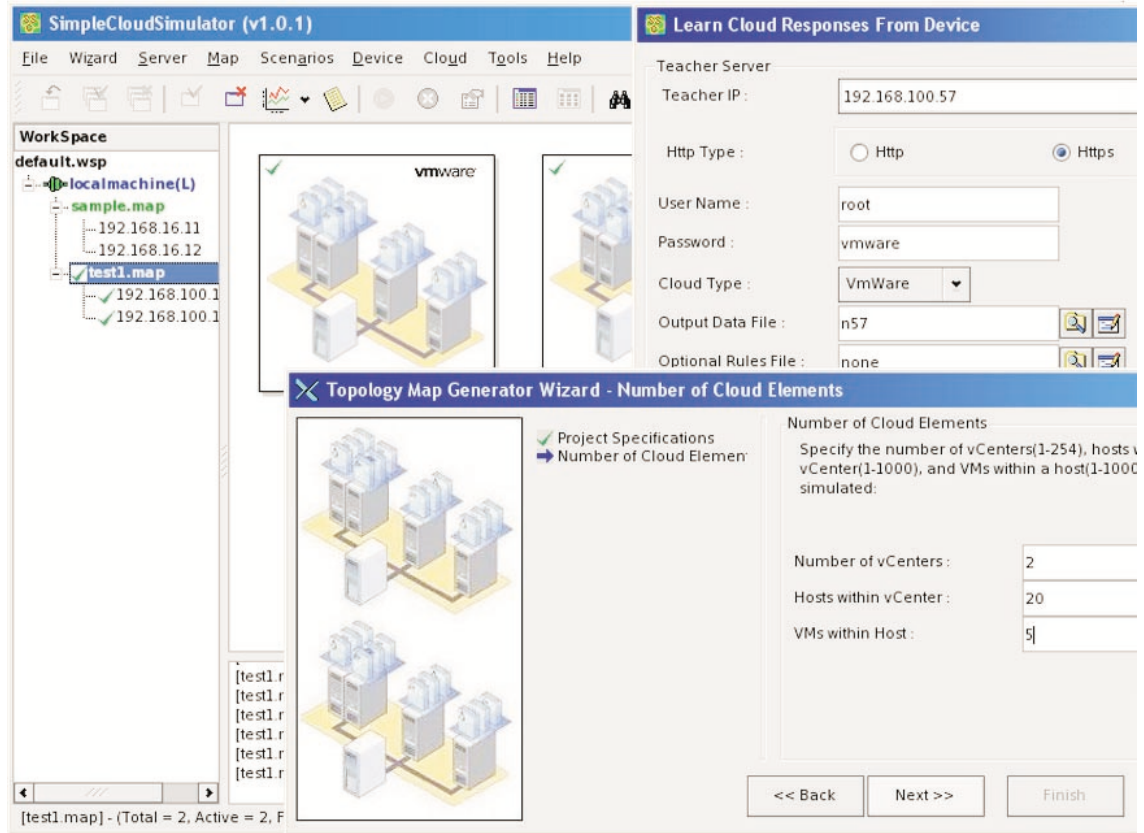


SimpleCloudSimulator™

A vSphere API simulator



Simplifying
Cloud
Management



Overview

SimpleCloudSimulator is an easy to use, vSphere API simulator that quickly creates test environments with tens of vCenters, each with hundreds of hosts and thousands of VMs, all on just one computer.

SimpleCloudSimulator can help cloud management application vendors improve product quality and significantly shorten their time-to-market without incurring large capital expense for test infrastructure. The simulator can “learn” from existing vCenters to duplicate customer environments, or use the learnt data as a template to create hundreds of managed objects, and even create scripted error scenarios on demand.

Applications

Development and QA groups can do scalability and functional testing without large infrastructure. Sales groups can create realistic demos that highlight the management application features to shorten sales cycles while Training departments can create portable teaching environments with quick setup. Professional services can create targeted services using duplicated customer environments while Tech Support departments can more easily reproduce customer problems in their test labs. Even end-users can evaluate different management offerings without first deploying them in their production environment.

Operation

Only a few simple steps are required to start using the **SimpleCloudSimulator**. They are:

- Use the built-in learner utility to record properties, events and performance data from a real vCenter.
- Use this learnt data to create tens of vCenters or as a template to create test environments with hundreds of hosts and thousands of VMs.
- Run scripts to create error scenarios, generate events and dynamically change properties.

Support for changing performance data is built-in without requiring any user programming. To support additional management protocols like SNMP, Telnet, SSH a cloud management module is available within the popular **SimpleAgentPro** and **SimpleAgentEnterprise**.

System Requirements

- RedHat Enterprise Linux